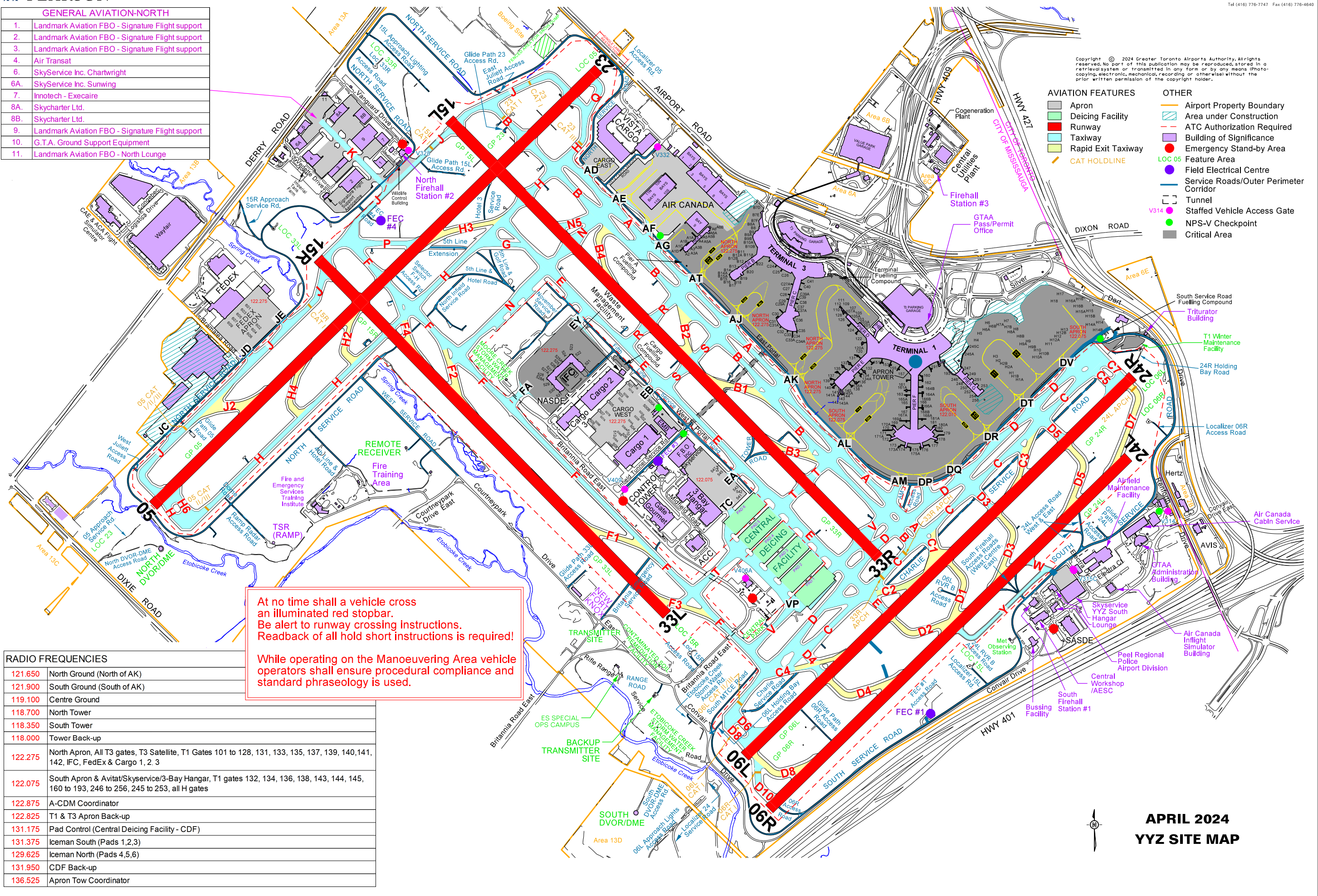


**GENERAL AVIATION-NORTH**

1. Landmark Aviation FBO - Signature Flight support
2. Landmark Aviation FBO - Signature Flight support
3. Landmark Aviation FBO - Signature Flight support
4. Air Transat
5. SkyService Inc. Chartwright
6. SkyService Inc. Sunwing
7. Innotech - Exeaire
8. Skycharter Ltd.
- 8B. Skycharter Ltd.
9. Landmark Aviation FBO - Signature Flight support
10. G.T.A. Ground Support Equipment
11. Landmark Aviation FBO - North Lounge



**At no time shall a vehicle cross an illuminated red stopbar. Be alert to runway crossing instructions. Readback of all hold short instructions is required!**

**While operating on the Manoeuvring Area vehicle operators shall ensure procedural compliance and standard phraseology is used.**

**RADIO FREQUENCIES**

121.650	North Ground (North of AK)
121.900	South Ground (South of AK)
119.100	Centre Ground
118.700	North Tower
118.350	South Tower
118.000	Tower Back-up
122.275	North Apron, All T3 gates, T3 Satellite, T1 Gates 101 to 128, 131, 133, 135, 137, 139, 140, 141, 142, IFC, FedEx & Cargo 1, 2, 3
122.075	South Apron & Aviat/SkyService/3-Bay Hangar, T1 gates 132, 134, 136, 138, 143, 144, 145, 160 to 193, 246 to 256, 245 to 253, all H gates
122.875	A-CDM Coordinator
122.825	T1 & T3 Apron Back-up
131.175	Pad Control (Central Deicing Facility - CDF)
131.375	Iceman South (Pads 1,2,3)
129.625	Iceman North (Pads 4,5,6)
131.950	CDF Back-up
136.525	Apron Tow Coordinator

Copyright © 2024 Greater Toronto Airports Authority. All rights reserved. No part of this publication may be reproduced, stored in a retrieval system or transmitted in any form or by any means (photocopying, electronic, mechanical, recording or otherwise) without the prior written permission of the copyright holder.

**APRIL 2024  
YYZ SITE MAP**